

Cynomolgus CD3E/CD3 epsilon 1-27 Protein

Cat. No. CD3-CM2ED



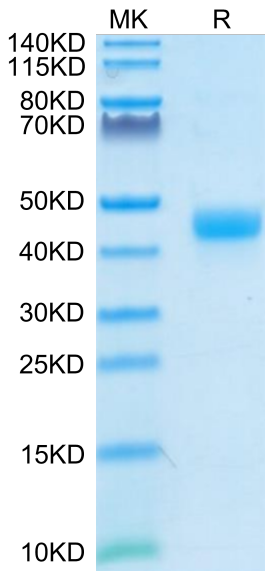
Description	
Source	Recombinant Cynomolgus CD3E/CD3 epsilon 1-27 Protein is expressed from HEK293 with hFc tag and Avi tag at the C-Terminus. It contains Asp22-Thr48.
Accession	Q95LI5.2
Molecular Weight	The protein has a predicted MW of 31.3 kDa. Due to glycosylation, the protein migrates to 40-50 kDa based on Bis-Tris PAGE result.
Endotoxin	Less than 1 EU per µg by the LAL method.
Purity	> 95% as determined by Bis-Tris PAGE > 95% as determined by HPLC

Formulation and Storage	
Formulation	Lyophilized from 0.22µm filtered solution in PBS (pH 7.4). Normally 8% trehalose is added as protectant before lyophilization.
Reconstitution	Dissolve the lyophilized protein in distilled water. Please refer to the Certificate of Analysis for detailed instructions.
Storage	-20 to -80°C for 12 months as supplied from date of receipt.-80°C for 3 months after reconstitution.Recommend to aliquot the protein into smaller quantities for optimal storage. Please minimize freeze-thaw cycles.

Background	
CD3E, is a single-pass type I membrane protein.CD3 (cluster of differentiation 3) T cell co-receptor helps to activate both the cytotoxic T cell (CD8 naive T cells) and also T helper cells (CD4 naive T cells). It consists of a protein complex and is composed of four distinct chains. In mammals, the complex contains a CD3γ chain, a CD3δ chain, and two CD3ε chains.	

Assay Data

Bis-Tris PAGE



Cynomolgus CD3E 1-27 on Bis-Tris PAGE under reduced condition. The purity is greater than 95%.

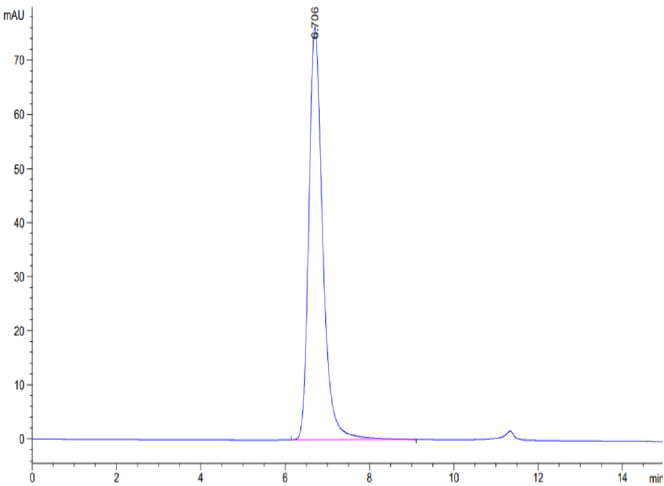
SEC-HPLC

Cynomolgus CD3E/CD3 epsilon 1-27 Protein

Cat. No. CD3-CM2ED



Assay Data

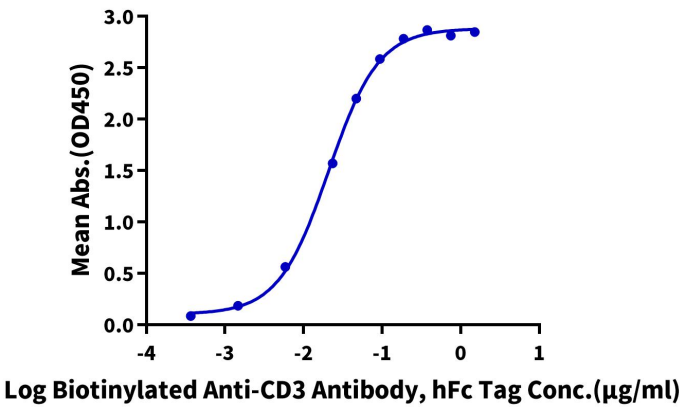


The purity of Cynomolgus CD3E 1-27 is greater than 95% as determined by SEC-HPLC.

ELISA Data

Cynomolgus CD3E 1-27, hFc Tag ELISA

0.2µg Cynomolgus CD3E 1-27, hFc Tag Per Well



Immobilized Cynomolgus CD3E 1-27, hFc Tag at 2µg/ml (100µl/Well) on the plate. Dose response curve for Biotinylated Anti-CD3 Antibody, hFc Tag with the EC50 of 20.7ng/ml determined by ELISA (QC Test).